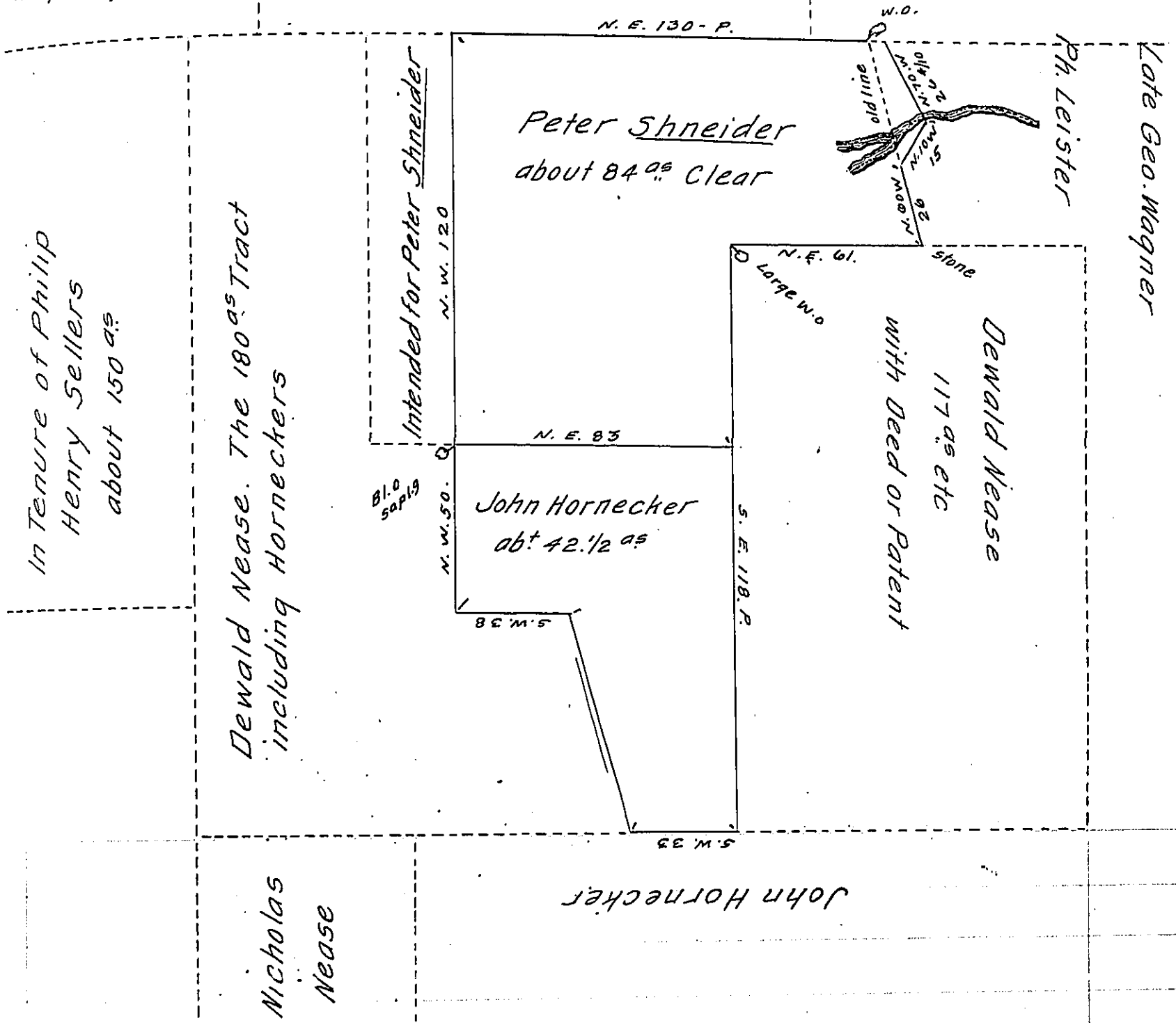


Late W^m Allens
now
Maybury

Dewald Nease of the
Proprietary Land



The above Shows the Situation of Part of M^r Frames Manor
in Rockhill Township Bucks County. as John Hornecker^s
Peter Shneider^s and Dewald Nease^s relating the dispute bet-
ween them.

P. D. S. -

IN TESTIMONY that the above is a copy of the original remaining on file in
the Department of Internal Affairs of Pennsylvania, made
conformably to an Act of Assembly approved the 16th day of
February, 1833, I have hereunto set my Hand and caused
the Seal of said Department to be affixed at Harrisburg,
this seventeenth day of June 1910.

Henry Howell
Secretary of Internal Affairs.

copy delivered